

NAVASTRID

Baugeräte

www.navastrid.de





En Iniya Makkale,
Neu Catalogue,
Neu look...



Form Work

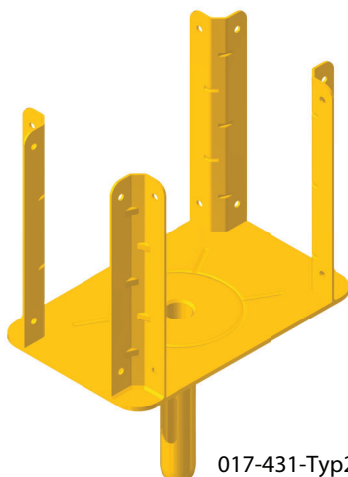


Head for form-work props - Fitted on top of form-work props to hold the wood form-work support

Article.	Article no.	Weight.
Fork head (standard), Galvanized	017-431-Typ1	2.55 kg
Fork head (light), Powder Coated	017-431-Typ1	1.90 kg
Fork head (Weight), Galvanized	017-431-Typ5	4.00 kg



017-431-Typ1



017-431-Typ2



017-431-Typ5

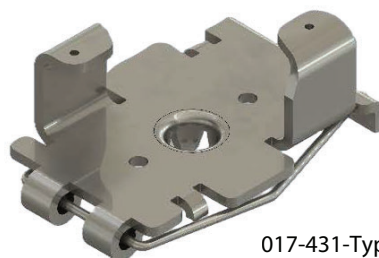
Head for form-work props (specially for H20 beam)

Fitted on top of form-work props to hold the wood form-work support

Article.	Article no.	Weight.
Fork head, Galvanized	017-431-Typ4	1.20 kg
Fork head attachment for prop, Galvanized	017-431-Typ5	1.00 kg



017-431-Typ4



017-431-Typ5



Tripod stand - The form work prop , Suitable for all types props

Article.

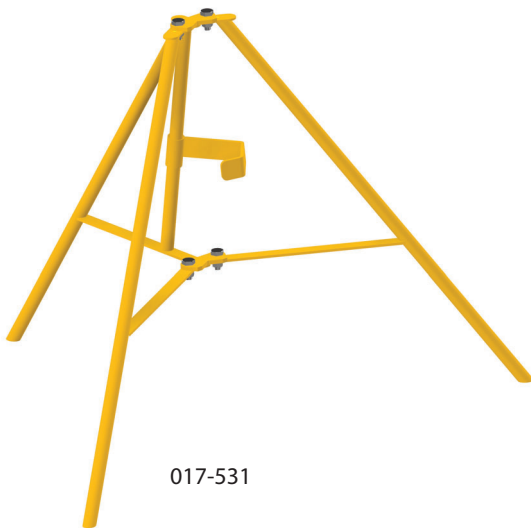
Tripod, made with **round tube**, Powder coated
Tripod, made with **square tube**, Galvanized

Article no.

017-531
017-532

Weight.

6.40 kg
10.90 kg



017-531

Tripod stand for square aluminum props - the form work prop can be fixed simply by a bracket that is supported movable on the tripod stand. The feet can be adjusted and are collapsible for space-saving transport. Suitable for all types of form work props, galvanized

Article.

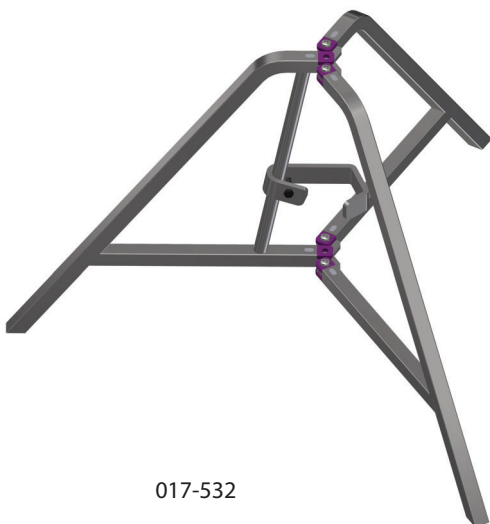
Tripod, made with **square tube**, Galvanized

Article no.

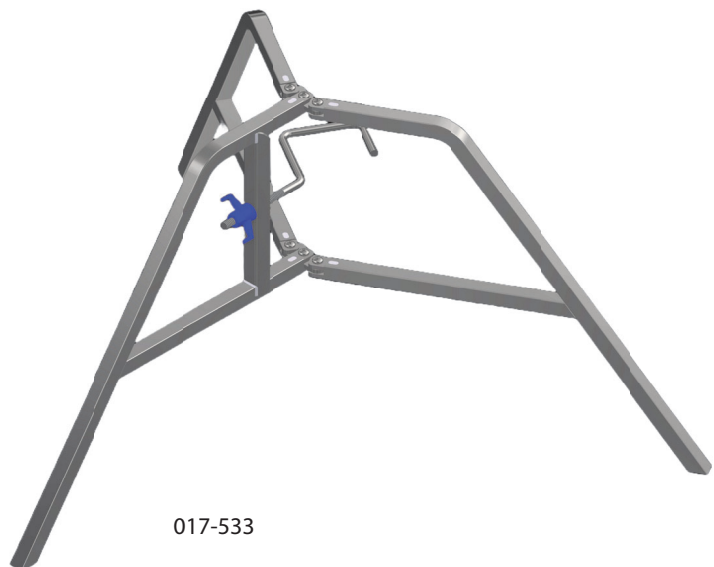
017-533

Weight.

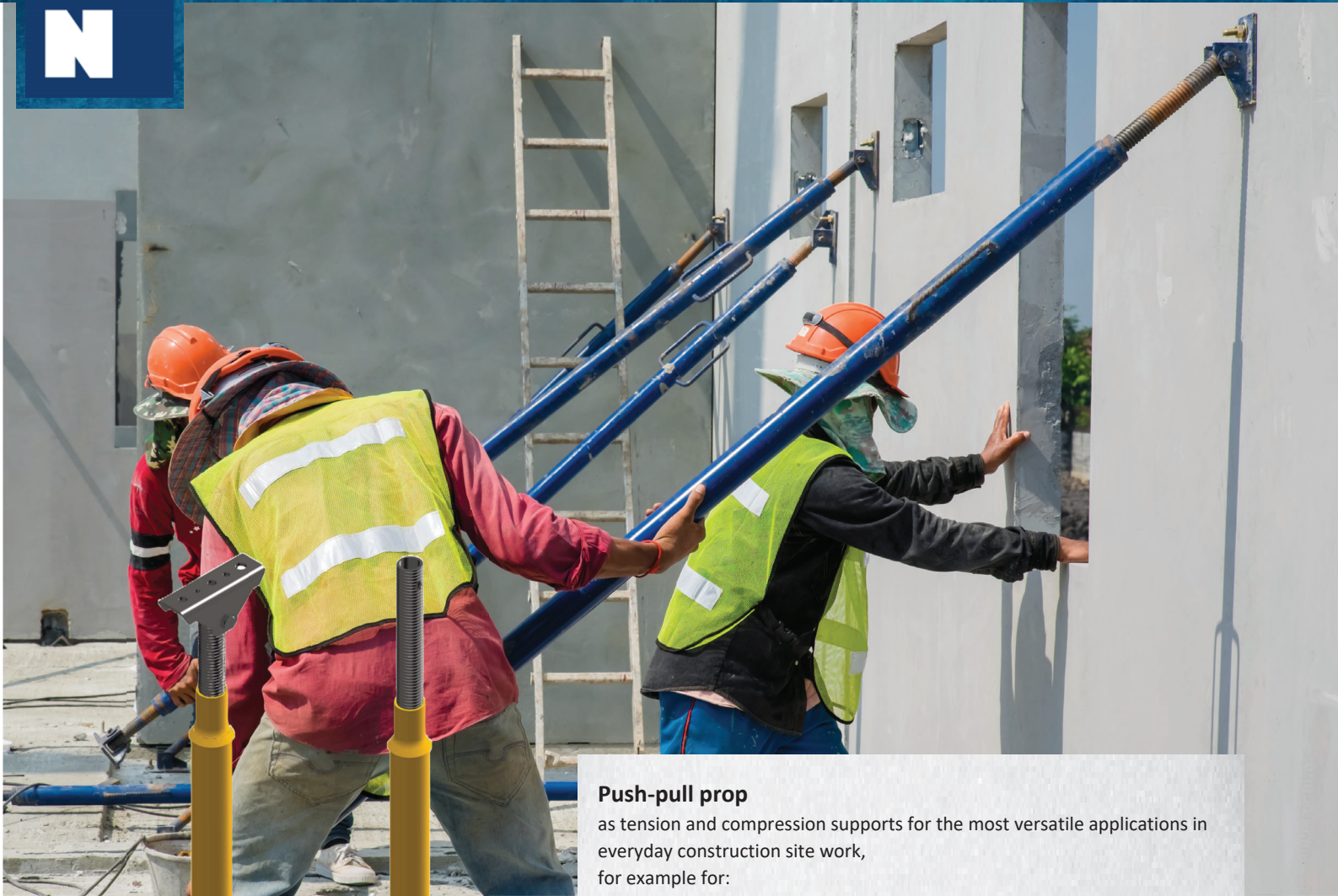
12.10 kg



017-532



017-533



Push-pull prop

as tension and compression supports for the most versatile applications in everyday construction site work, for example for:

- Supporting a wide variety of system formwork, wall and column formwork
- Adjustment and support of precast concrete elements, in particular of hollow or shell walls
- Supporting of column formwork tubes

Tube Specification - Spindle - $\varnothing 47/43.5\text{mm}$ & Tube - $\varnothing 70 \times 4.0\text{mm}$

Push-pull prop type R

painted with inner thread, both sides without end joint

Part-No.	Adjustment range	Kg	Load at 45° (kN)	
			on pressure	on strength
117901R	90 - 150 cm	10.3 ^A	40.0	40
117911R	180 - 320 cm	19.6 ^B	40.0	40
117921R	260 - 400 cm	24.8 ^C	38.8	40
117931R	360 - 500 cm	31.4 ^C	31.4	40
117941R	480 - 620 cm	39.2 ^D	26.4	40
117951R	620 - 760 cm	48.3 ^D	22.9	40

Push-pull prop type R with end joint

painted with inner thread, on both sides with end joint

Part-No.	Adjustment range	Kg	Load at 45° (kN)	
			on pressure	on strength
117901R-EG	90 - 150 cm	13.9 ^A	40.0	40
117911R-EG	180 - 320 cm	24.0 ^B	40.0	40
117921R-EG	260 - 400 cm	29.2 ^C	38.8	40
117931R-EG	360 - 500 cm	35.7 ^C	31.4	40
117941R-EG	480 - 620 cm	43.5 ^D	26.4	40
117951R-EG	620 - 760 cm	51.3 ^D	22.9	40



Beam forming support - for insertion on H20 wooden formwork beam, for edge and slab formwork, by means of a spindle the holding claw grips the H20 girder and fixes the beam clamp, the height adjustment is made with captive bolt in the hole grid
Special - this device can be inserted from top of H20 beam, apart from side inserting

Article.

Beam forming support, Galvanized

Article no.

17-789

Weight.

13.80 kg



Shuttering support inclinable & Formwork clamp - for strip foundations for beams or for all formwork operations.

Article.

Stop-end prop, painted

Slotted clamp, Length 900mm x width 500mm

Spindle clamp, Length 900mm x width 500mm

Article.

017-789

017-952-1

017-952-2

Weight.

16.8 Kg

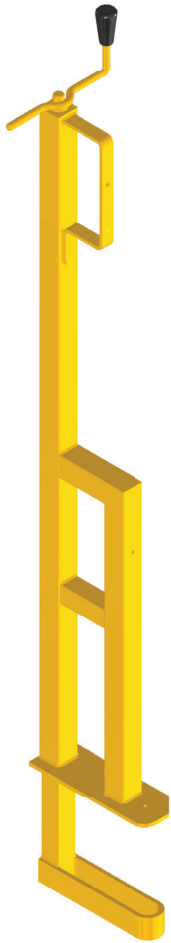
12.5 kg

11.0 kg



Guard rail clamp with crank - Fall arrester when working at a height, the clamp is pressed against the ceiling by wedge produces the required pressure and is fixed to the clamp by a threaded rod and a nut, suitable for ceilings up to 40cm thickness, the mechanical parts are installed inside the guard rail clamp for protection and long life, the guard rail clamp can be fixed easily by crank at a comfortable level, for arresting fall, a plank can be installed in the hook provided, the plank can be fixed in a hole in the hooks, in which a nail can be driven to fix the plank

Article.	Article no.	Weight.
Guard rail, Powder coated	17-230	7.0 kg
Guard rail, Galvanized	17-230H	7.0 kg



17-230



17-232

Guard rail clamp with wing nut adjustment - for fall protection when working at heights, the clamp is pressed onto the ceiling by means of a wing nut and can be used for and can be used for ceilings up to 40 cm thick, handle facilitate for thee plank.

Article.	Article no.	Weight.
Guard rail, Galvanized	17-232	12.70 kg



Guard rail clamp with adjustment by wedge - for fall protection when working at a height, the clamp is pressed to the ceiling by the wedge and can be used on ceilings up to 40cm thickness, handle facilitate for three plank.

Article.
Guard rail, Powder coated

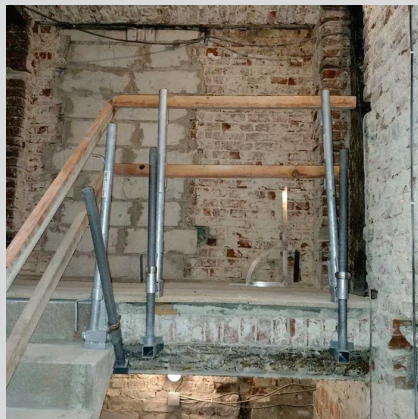
Article no.
17-231

Weight.
6.1 kg



17-231

Article no.17-235 visual reference

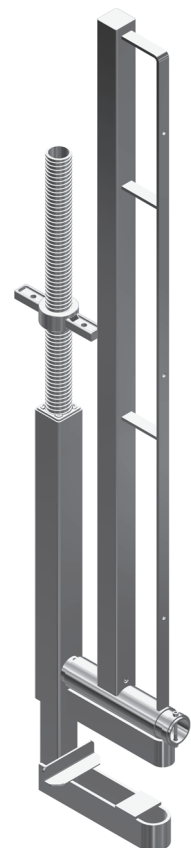


Guard rail clamp with wing nut adjustment (with vertical rotation facilitate) - for fall protection when working at heights, the clamp is pressed onto the ceiling by means of a wing nut and can be used for and can be used for ceilings up to 40 cm thick, handle facilitate for three plank. **With vertical post rotation facilitate for securing slop and stairs**

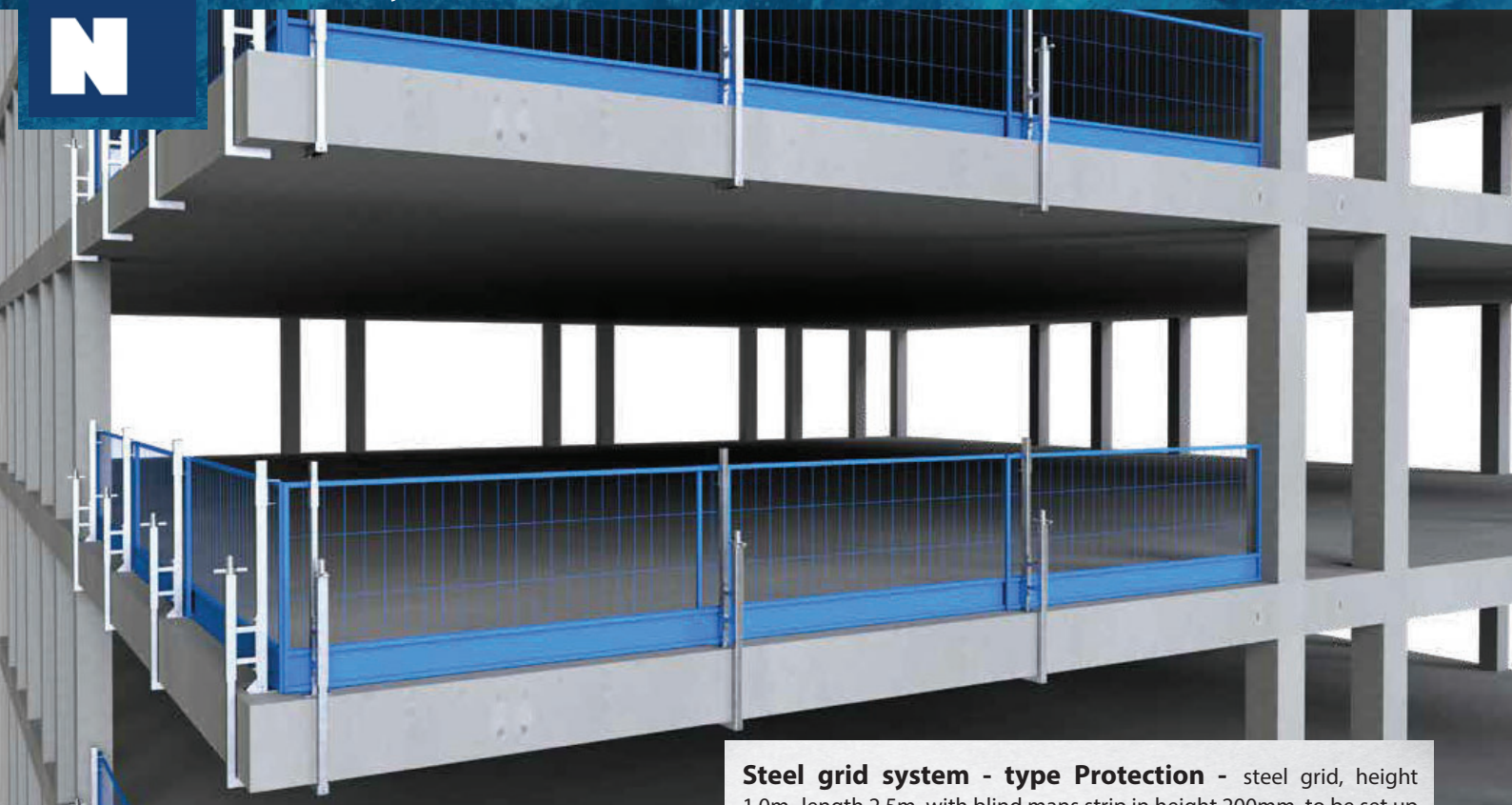
Article.
Guard rail, Galvanized

Article no.
17-235

Weight.
13.50 kg



17-235

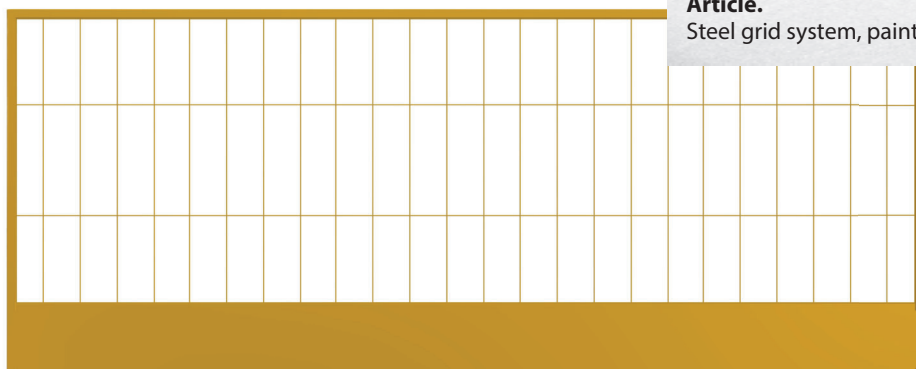


Steel grid system - type Protection - steel grid, height 1.0m, length 2.5m, with blind mans strip in height 200mm, to be set up with post for plugging down (part-no. 017-711-5) or mounting clamp (part-no. 017-711-4)

Article.
Steel grid system, painted

Article no.
017-711-1

Weight.
15.9 kg



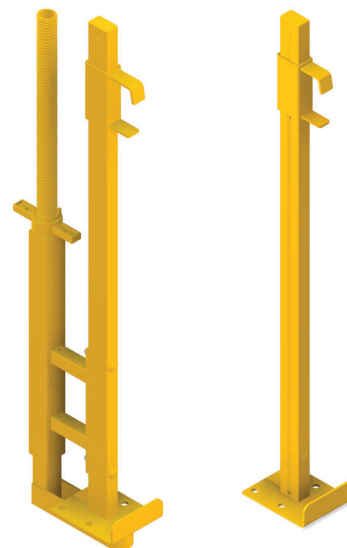
017-711-1

Steel grid post - type Protection - made of square tube for fastening of raw construction grids on floor plates by means of clamps, suitable for ceiling thicknesses from 0 to 40cm, conveniently clampable via wing nut with spindle, post height above ground 1.1m,

Article.
Fixing clamp
Adjustable clamp

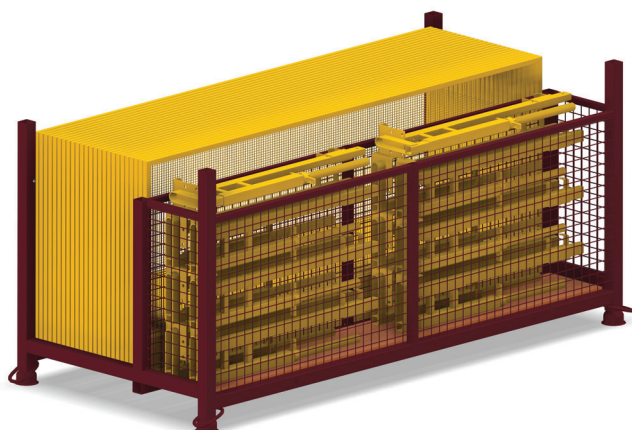
Article no.
017-711-5
017-711-4

Weight.
4.6 kg
8.5 kg



017-711-4

017-711-5



Pallet - store and transport
25 x fixing clamp type Protection
25 x steel grid system type Protection

Article.
Pallet

Article no.
601-336

Weight.
163.0 kg



Construction stairs (Foldable)

as a temporary traffic route for bridging individual storey levels or as access to an excavation pit or to overcome steep bushes. Entrance steps are beveled for safe stepping. The stairs are available in 6 different lengths or two widths, 700 mm. The railings automatically adjust to the correct height to match the angle of the stairs. Due to the folding mechanism of the staircase, handling, transport and storage is simplified.

Manufactured according to DIN EN 12811 - CE marking

Finish: hot dip galvanized

Article.	Article no.	Weight.
Width 700 with 04 stair steps, height 0510-0835 mm	558-212-4	48.0 kg
Width 700 with 07 stair steps, height 0920-1505 mm	558-212-7	72.0 kg
Width 700 with 10 stair steps, height 1320-2160 mm	558-212-10	94.0 kg
Width 700 with 13 stair steps, height 1725-2835 mm	558-212-13	123.0 kg
Width 700 with 16 stair steps, height 2130-3490 mm	558-212-16	142.0 kg
Width 700 with 19 stair steps, height 2535-4155 mm	558-212-19	165.0 kg



Construction stairs (Kit)

Stair

construction stairs single step for fixing to wooden planks or squared timber, which can be set up to any length of construction site stairs, where construction pits or slopes or floors must be overcome. The tread area is 225 mm x 1000mm, each step can be screwed on or nailed on, in addition, railing posts part-no. 558-313-P3 should be attached at a distance of approx. 2 m, which are screwed to the single steps with adapter attachments, part-no. 558-313-P2.

Mounting for guardrail post

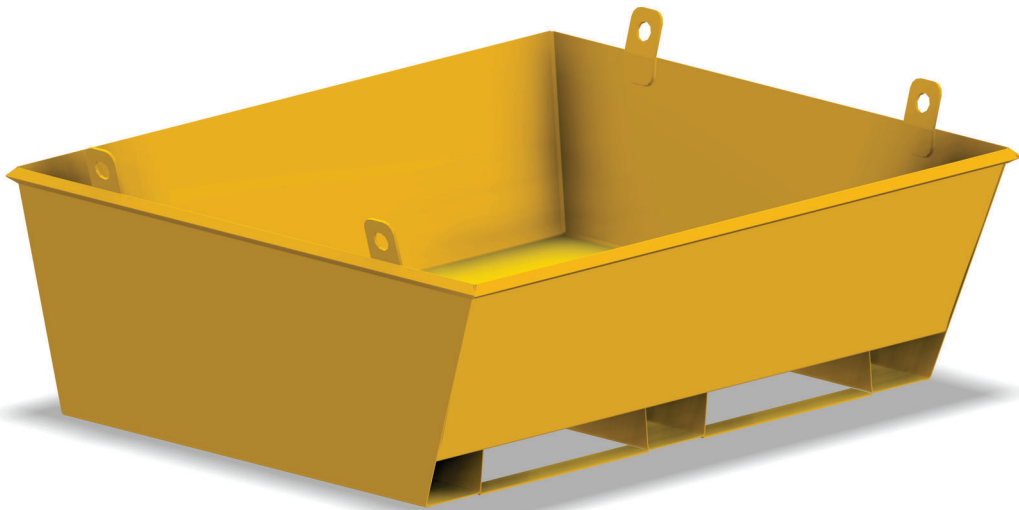
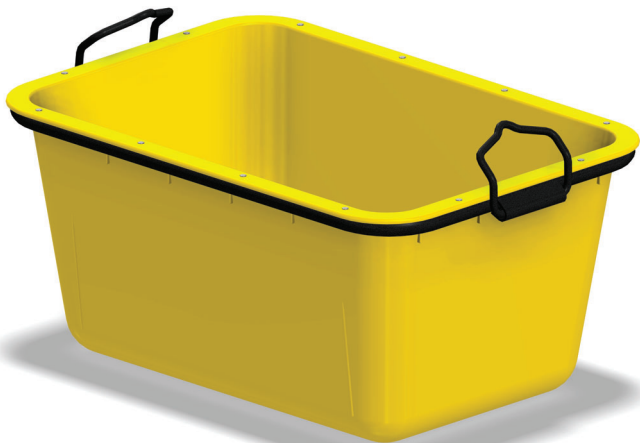
pipe socket for insertion of Ø48.3 mm railing posts, incl. fixing plate for screwing to side stair beams, fixing screws included in delivery

Railing post

for insertion in the socket (part-no. 558-313-P2) of the crank-operated or universal scaffolding jack, steel tube construction of Ø 48.3 mm round tube with 2 welded hooks for mounting planks as fall arrester, the planks can be fixed in holes in the hooks, in which nails can be driven to fix the planks, the bottom hook is movable and holds skirting board for extra safety

Railing post height: 1.00 m

Article.	Article no.	Weight.
Stair	558-313-P1	5.5 kg
Mounting for guardrail post	558-313-P2	1.5 kg
Railing post	558-313-P3	3.5 kg



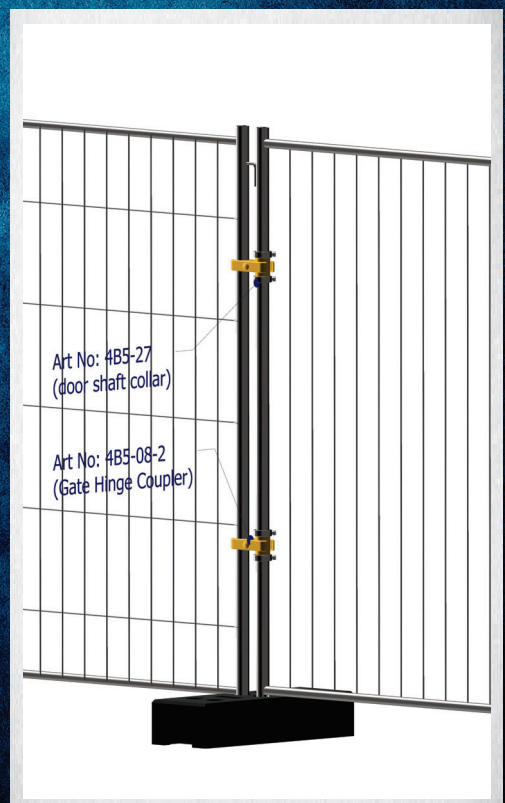
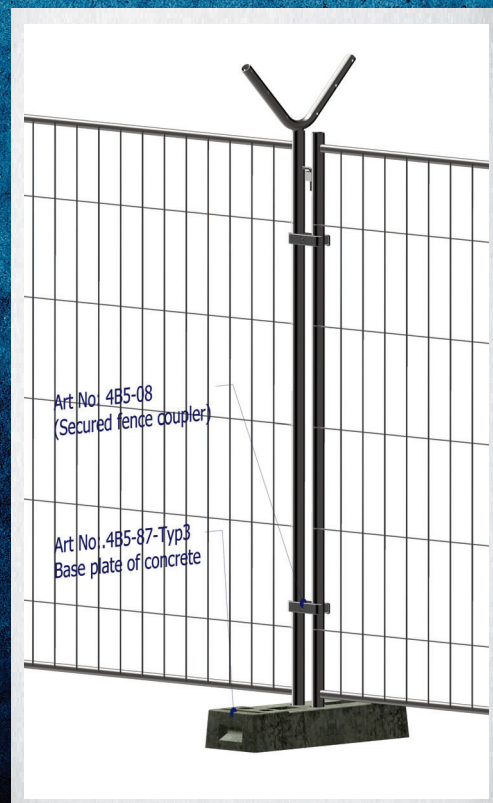
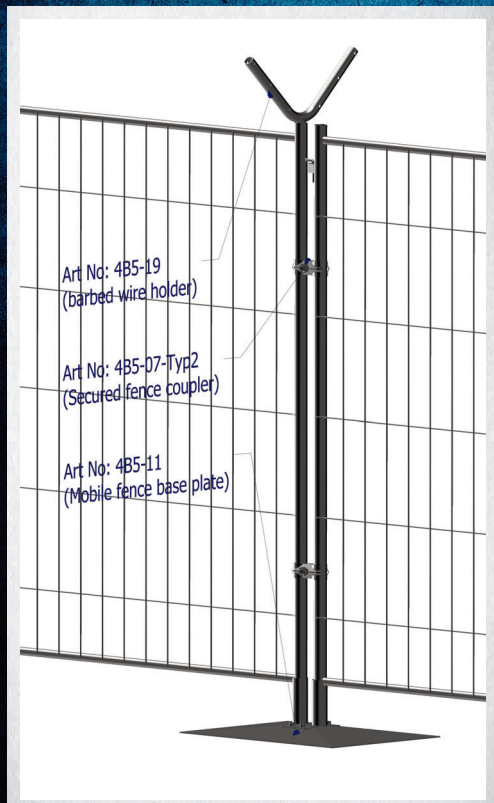
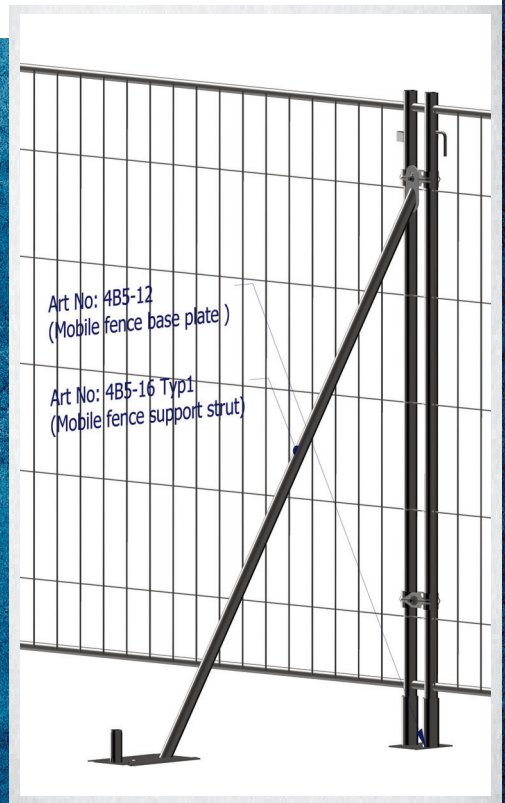
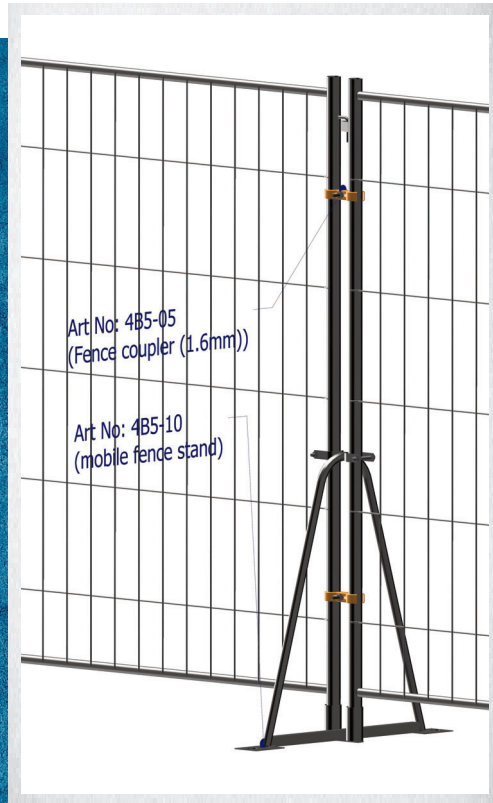
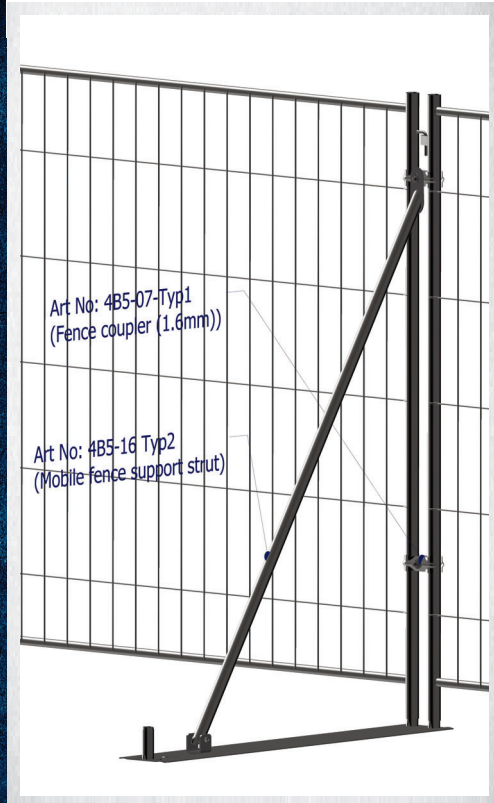
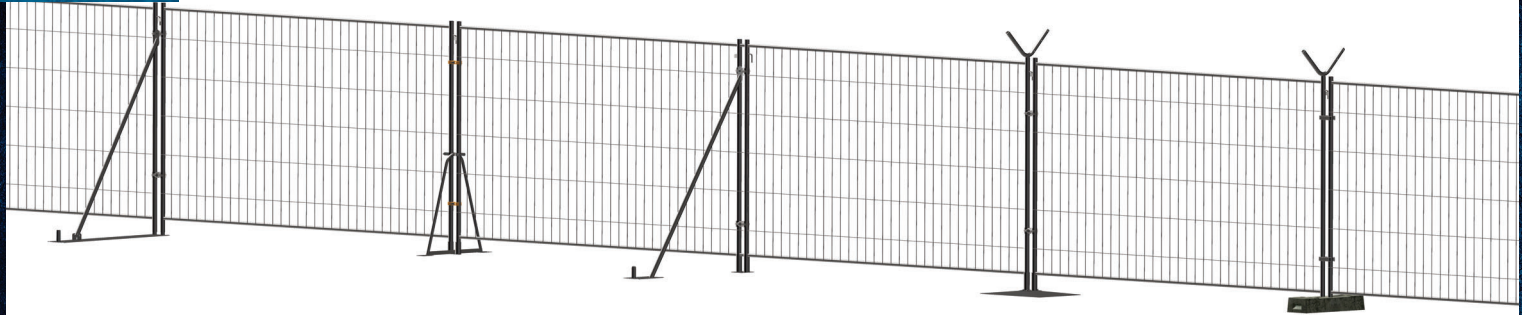
Note - 20 mortat tray, stacked in single wooden pallet. 16 such pallets can be stuffed in one 40ft hi cube container

Mortat tray - For transportation material in site

Article.
Mortat tray 200 liter (material - plastic High Density Polyethylene)
Nominal load 500 Kg, size: length: 1050 mm width: 705 mm height: 490 mm
Mortat tray 360 liter (material - steel) **can be handled by forklift & crane**
Nominal load 900 Kg, size: length: 1300 mm width: 1300mm height: 330mm

Article no.	Weight.
887-133	15.7 kg
887-121	68.5 kg

Mobili Fence Accessories







Connecting clamp - For mobile fences for all size

Article.

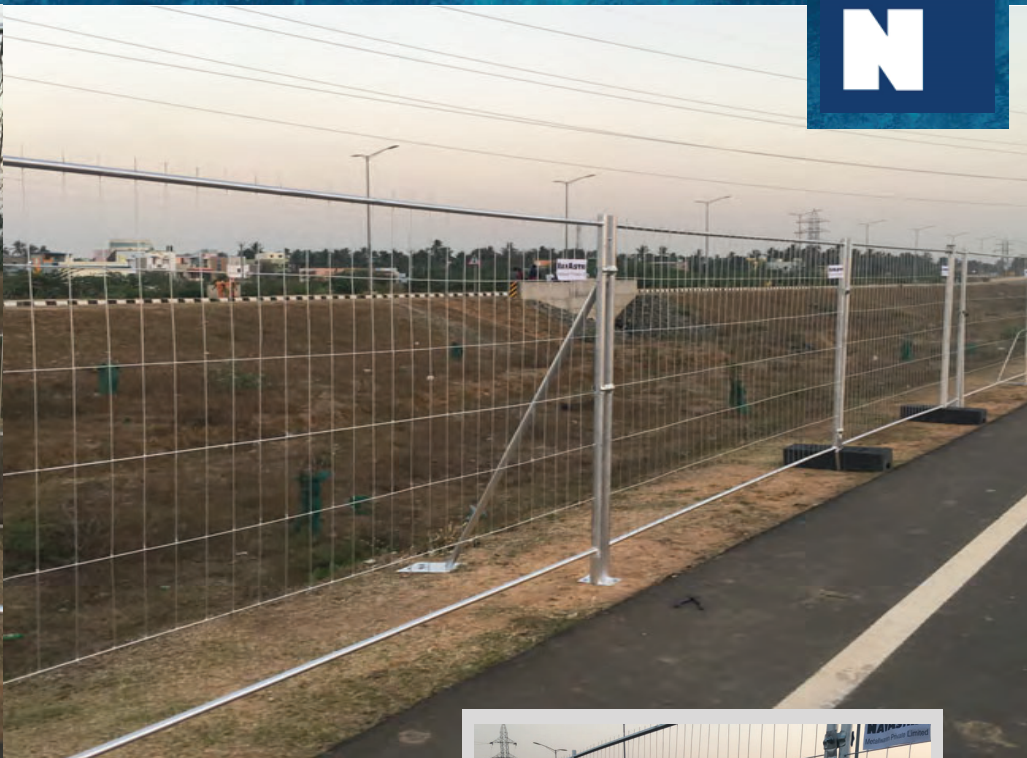
Connecting coupler, 2.5mm thickness, Galvanized
 Connecting coupler with secure nut to be opened by special spanner, 2.5mm thickness, Galvanized
 Connecting coupler with secure nut to be opened by special spanner, 1.6mm thickness, Galvanized
 Connecting coupler, 1.6mm thickness, Galvanized
 Door hing Connecting coupler, 1.6mm thickness, Galvanized
 Spanner for secure nut

Article no.

4B5-07-Typ1
 4B5-07-Typ2
 4B5-08
 4B5-05
 4B5-08-2
 4B5-07-Typ1

Weight.

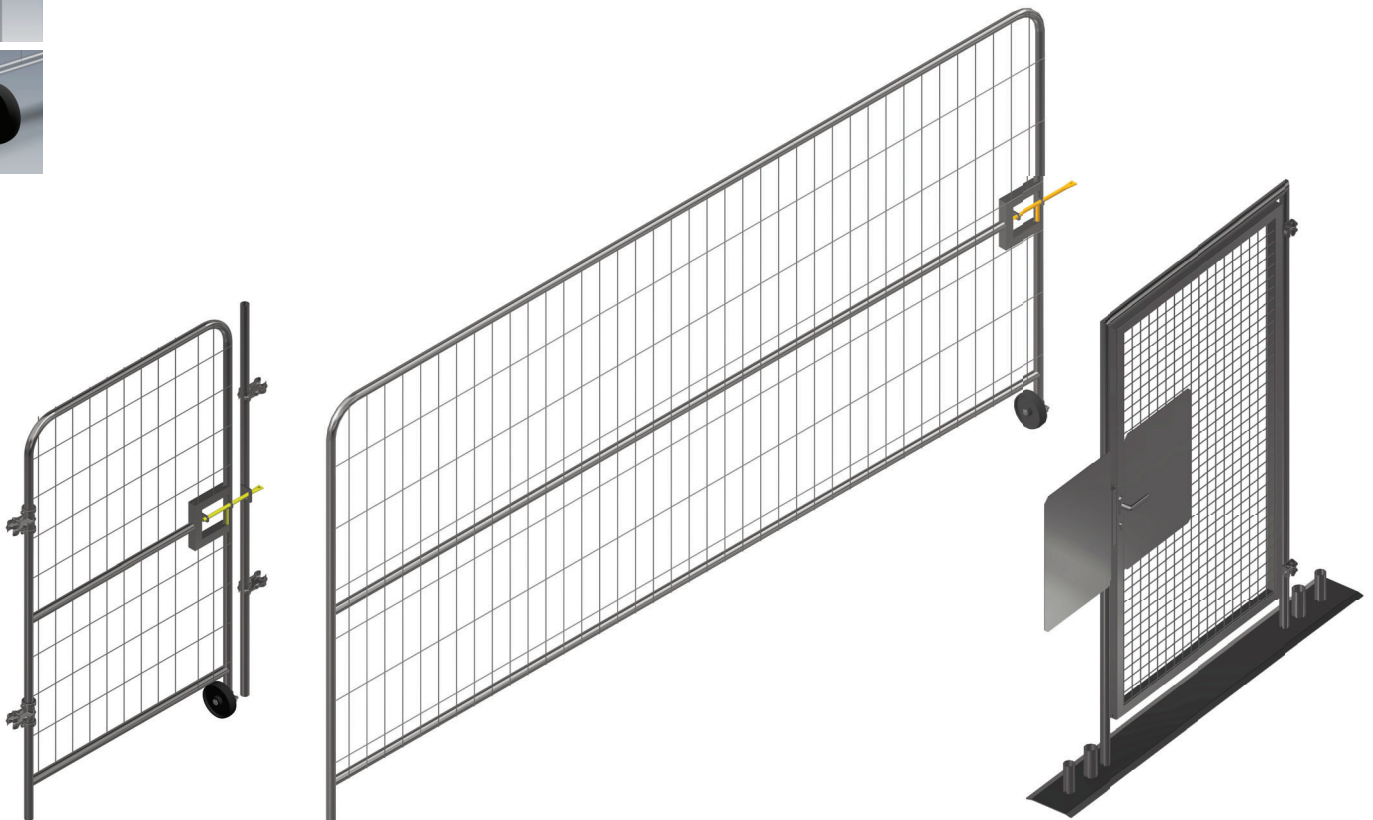
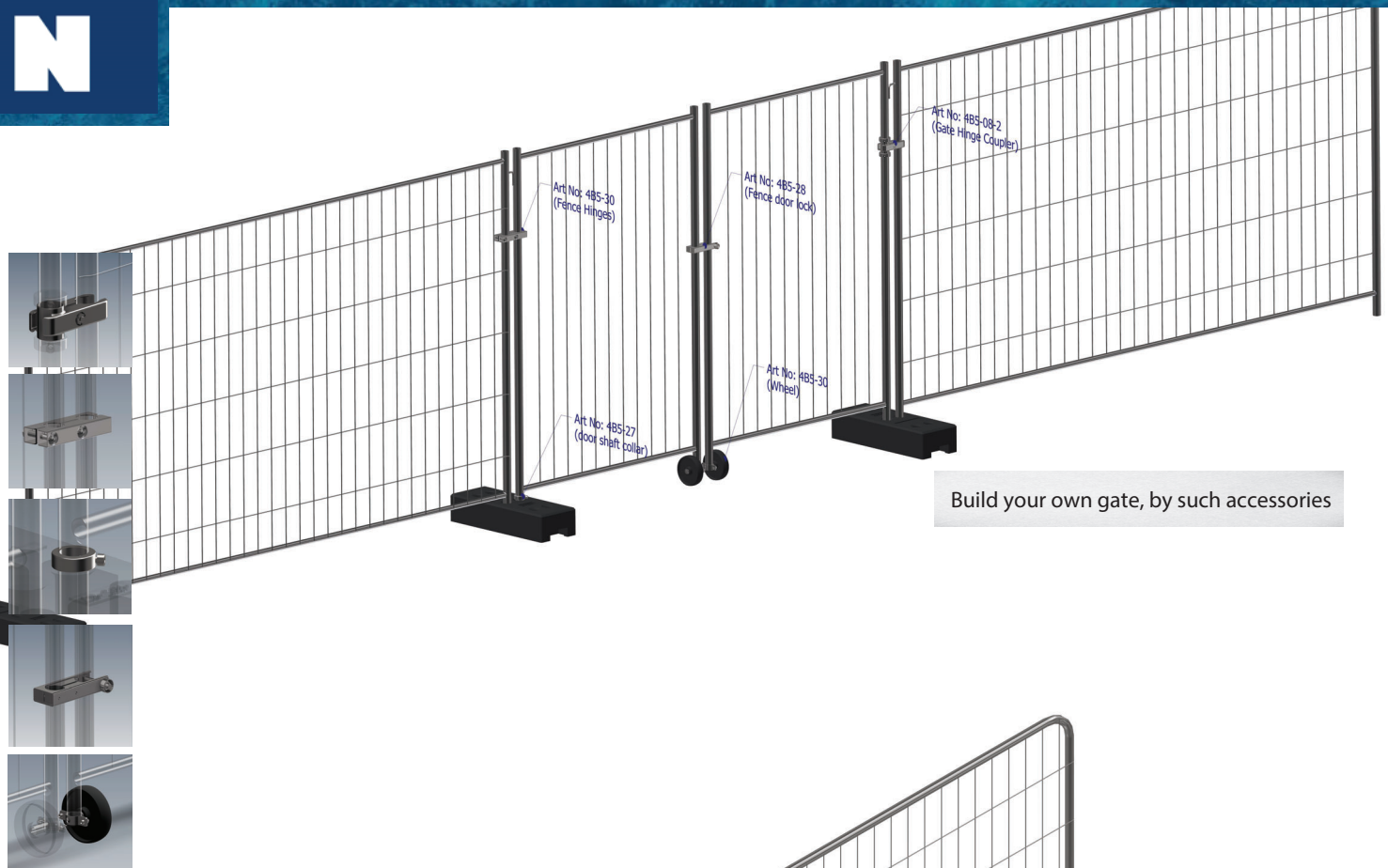
0.30 kg
 0.31 kg
 0.32 kg
 0.21 kg
 0.46 kg
 0.30 kg



Base plate & stabilizer- For mobile fences of all size

- Article.**
- Mobile fence support strut with tube-ports and plate
 - Mobile fence support strut with tube-ports
 - Mobile fence stand
 - Mobile fence base plate, with attachment heavy plate
 - Mobile fence base plate
 - Ground sockets

Article no.	Weight.
4B5-16-Typ2	0.30 kg
4B5-16-Typ1	11.00 kg
4B5-10	4.30 kg
4B5-11	12.30 kg
4B5-12	1.50 kg
4B5-13-Typ1	3.0 kg



Connecting clamp - For mobile fences base plate & stabilizer

Article.

Mobile fence gate for **truck access**, ready to fix. available size 1.2 m (**More Model Available**)

Mobile fence gate for **truck access**, ready to fix. available size 4 m (available in left and right version)

Mobile fence gate, ready to fix. welded from a sturdy steel with a standard lock and handles

Pivot joint

Door shaft collar

Fence door lock

Wheel

Gate hinge coupler

Article no.

4B5-16-Typ2

4B5-03

44B5-03-4

44B5-29

44B5-27

44B5-28

44B5-30

44B5-08-2

Weight.

0.30 kg

37.00 kg

54.30 kg

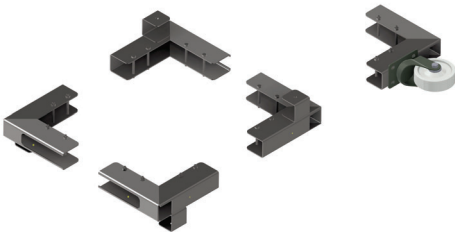
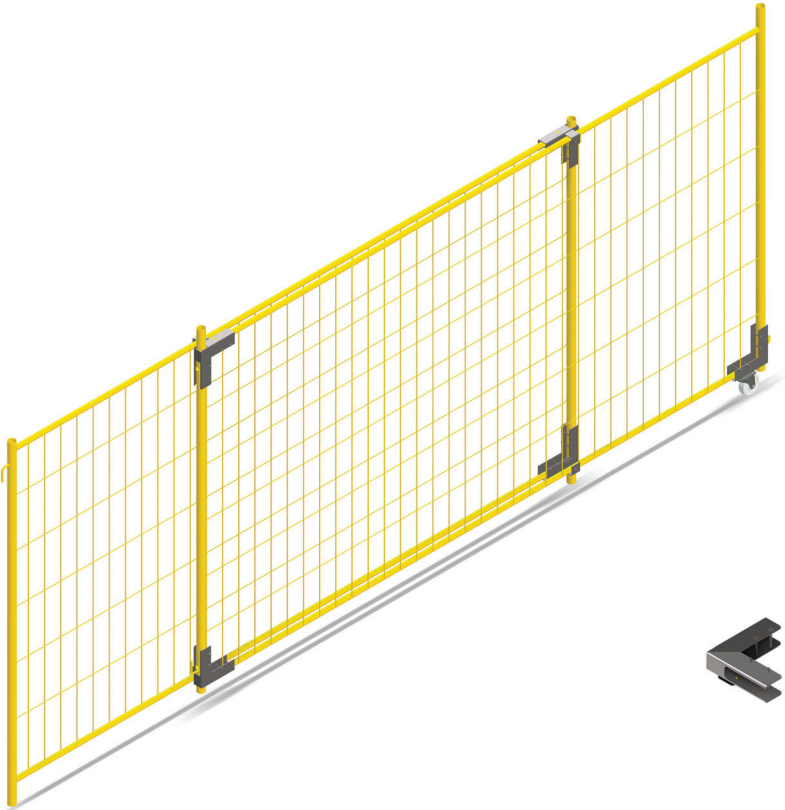
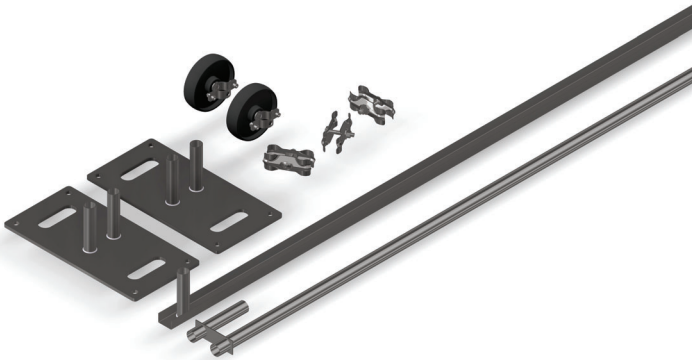
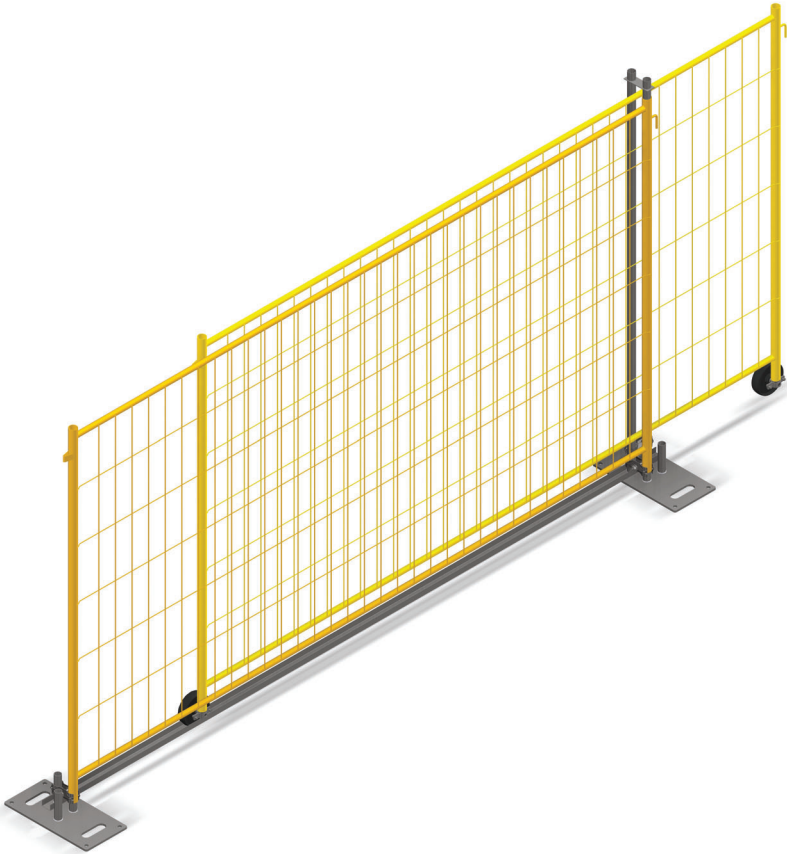
0.90 kg

0.30 kg

1.20 kg

0.80 kg

0.45 kg



Mobil fence sliding gate kit- For mobile fences for all size

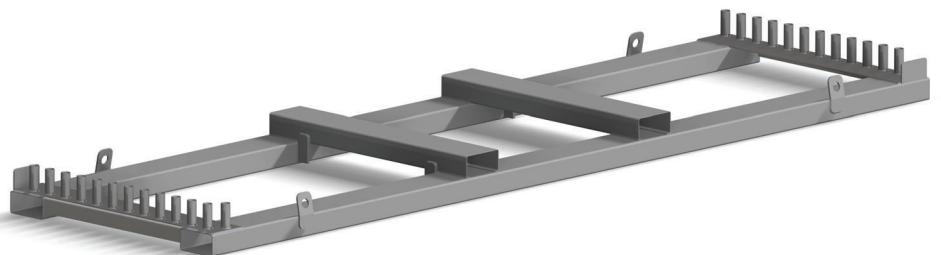
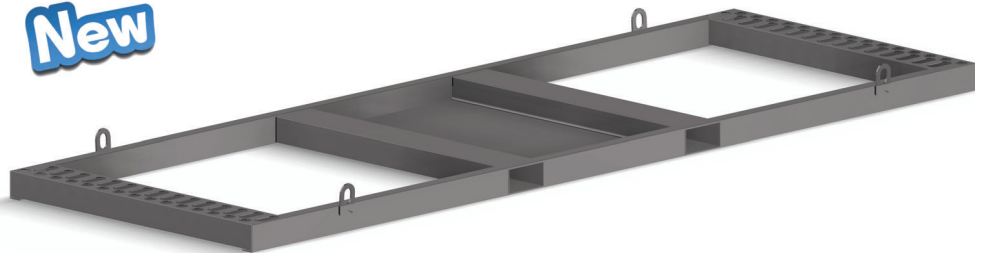
Article.
Metal mobile fence gate kit with **9 parts** (assembled at site). Fence not included
Metal mobile fence gate kit with **5 parts** (assembled at site). Fence not included

Article no.	Weight.
4B5-02	27.5 kg
4B5-12	7.0 kg





New



Storage & transport pallets - For mobile fences & base plate

Article.

Neu Storage and transport pallet for mobile fences, **for carrying 30 fence**

Storage and transport pallet for mobile fences, **for carrying 25 fence**

Storage and transport pallet for mobile fences, **for carrying 29 fence**

Combi storage and transport pallet for mobile fences, **for carrying 30 fence & 31 base**

Combi storage and transport pallet for mobile fences, **for carrying 30 fence & 31 base**

Article no.

S4T1997

S4T1976

S4T1977

S4T1980

S4T1992

Weight.

102.00 kg

92.00 kg

103.00 kg

185.00 kg

157.00 kg



A long line of silver metal crowd control barriers, also known as water-filled barriers, stretches across the frame from the foreground into the distance. The barriers are positioned on a wet asphalt surface, which reflects the ambient light. The barriers have a distinctive A-frame base and a vertical slatted top. In the background, a few people can be seen walking behind the barriers, and some greenery and a street lamp are visible under a clear sky.

Crowd Control Barrier & Tunnel



Crowd barrier - Type wide leg (Available in tube size Ø26.5 and Ø38.0)

Article.

Length 2.20m, 16 bars, of **Ø26.5 tube** frame

Length 2.20m, 16 bars, of **Ø38.0 tube** frame

Available in Galvanized and Powder Coated

Article no.

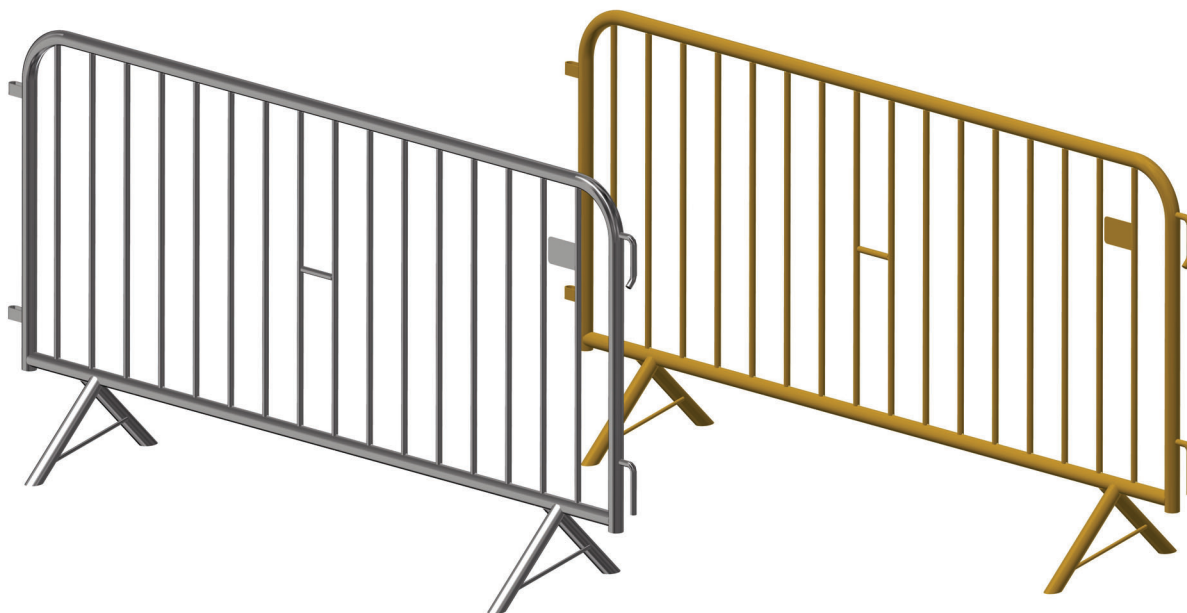
4B7-045-25 Typ1

4B7-045-38 Typ1

Weight.

14.00 kg

18.50 kg



Crowd barrier - Type A leg (Available in tube size Ø26.5 and Ø38.0)

Article.

Length 2.20m, 16 bars, of **Ø26.5 tube** frame

Length 2.20m, 16 bars, of **Ø38.0 tube** frame

Available in Galvanized and Powder Coated

Article no.

4B7-021-25 Typ1

4B7-021-38 Typ1

Weight.

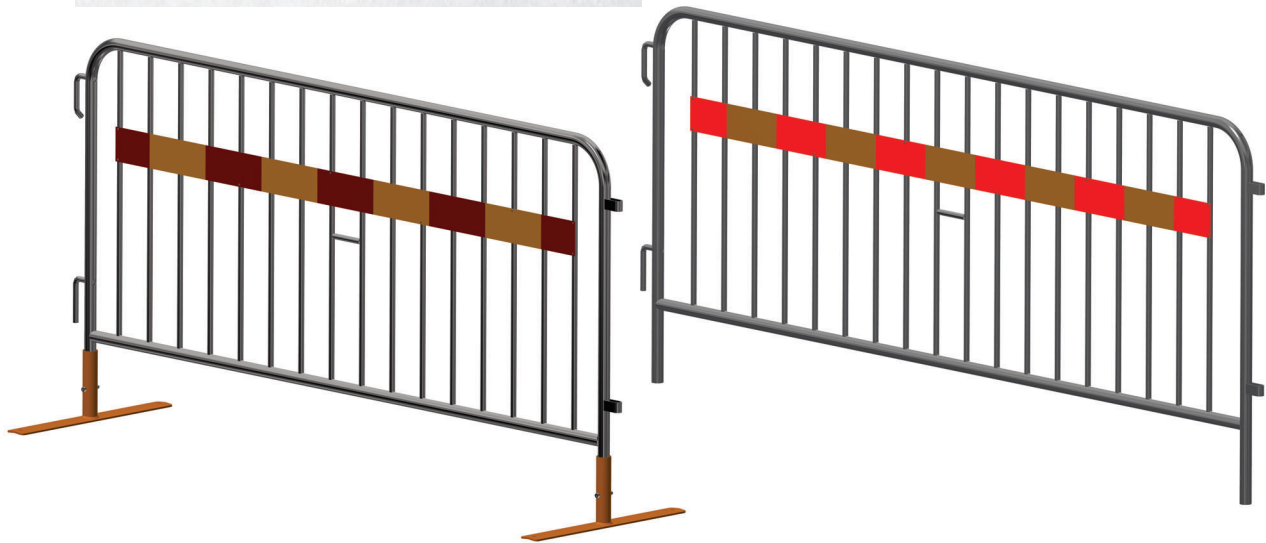
13.50 kg

18.00 kg



Visual preview
of reflector at night

Reflector -3M
Adhesive Reflective
(EN12899)



Crowd barrier - Type A leg (Available in tube size Ø33.7)

Article.

Length 2.20m, 16 bars, of **Ø33.7 tube** frame with foot (3M Adhesive Reflective (EN12899)
Length 2.50m, 18 bars, of **Ø33.7 tube** frame with foot (3M Adhesive Reflective (EN12899)

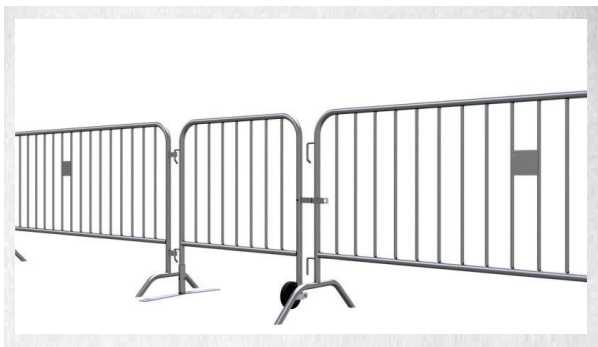
Article no.

4B7-021-25 Typ1
4B7-021-38 Typ1

Weight.

13.50 kg
15.00 kg

Available in without foot
Available in Galvanized and Powder Coated



Crowd barrier gate (set) - 1m path way (Available in tube size Ø33.7)

Article.

Length 1.0 m, 8 bars, of **Ø33.7 tube**

Article no.

4B7-092

Weight.

13.50 kg

Available in Galvanized and Powder Coated



Pedestrian tunnel element

consisting of:

- 2 x frame for pedestrian tunnel (part-no. 566-112)
- 4 x connecting strut for frame element (part-no. 566-114)
- 1 x cross connector for frame element (part-no. 566-118)
- 4 x swivel base jack (part-no. 566-120)
- 1 x wooden mobile fence 2.50m x 2.00m (part-no. 3B165A)
- 1 x wooden mobile fence 1.00m x 2.00m (part-no. 3B165B)
- 2 x transition element (part-no. 566-116)
- 4 x wooden decking (part-no. 2051100)

Part-No.	Kg
566-SET	365.0 c



Pedestrian tunnel corner element type A

consisting of:

- 1 x frame for pedestrian tunnel (part-no. 112500)
- 1 x corner frame for pedestrian tunnel (part-no. 112500E)
- 4 x connecting strut for corner frame element (part-no. 112501E)
- 4 x swivel base jack (part-No. 70670N)
- 1 x wooden mobile fence 2.50m x 2.00m (part-no. 3B165)
- 1 x corner element 0.50m x 1.00m (part-no. 3B165E-10)
- 1 x cross connector for corner frame element (part-no. 112502E)
- 2 x transition element (part-no. 112503)
- 4 x corner wooden decking (part-no. 2051100E)

Part-No.	Kg
566A-SET	330.0 c



Pedestrian tunnel corner element type B

consisting of:

- 1 x frame for pedestrian tunnel (part-no. 112500)
- 1 x corner frame for pedestrian tunnel (part-no. 112500E)
- 4 x connecting strut for corner frame element (part-no. 112501E)
- 4 x swivel base jack (part-no. 70670N)
- 1 x wooden mobile fence 1.00m x 2.00m (part-no. 3B165-10)
- 1 x corner element 0.50m x 2.50m (part-no. 3B165E)
- 1 x cross connector for corner frame element (part-no. 112502E)
- 2 x transition element (part-no. 112503)
- 4 x corner wooden decking (part-no. 2051100E)

Part-No.	Kg
566B-SET	305.0

4 x connecting strut
part-no. 566-114

4 x wooden decking 1.00 m x 2.00 m
part-no. 2051100

wooden mobile fence 2.50 m x 2.00 m
part-no. 3B165-1

2 x frame
part-no. 566-112

wooden mobile fence 1.00 m x 2.00 m
part-no. 3B165-2

2 x transition element
part-no. 566-116

cross connector
part-no. 566-118

4 x swivel base jack
part-no. 566-120





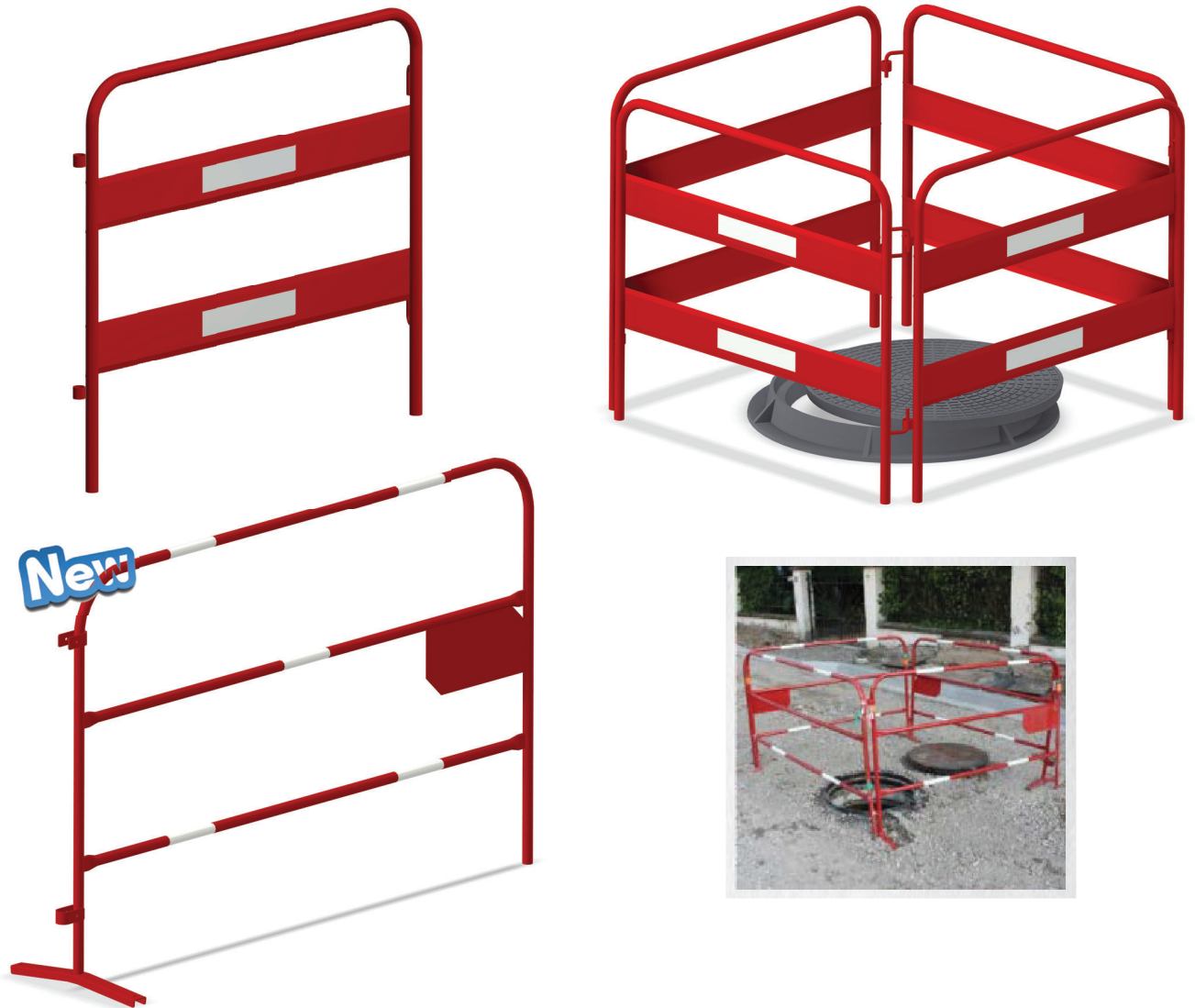
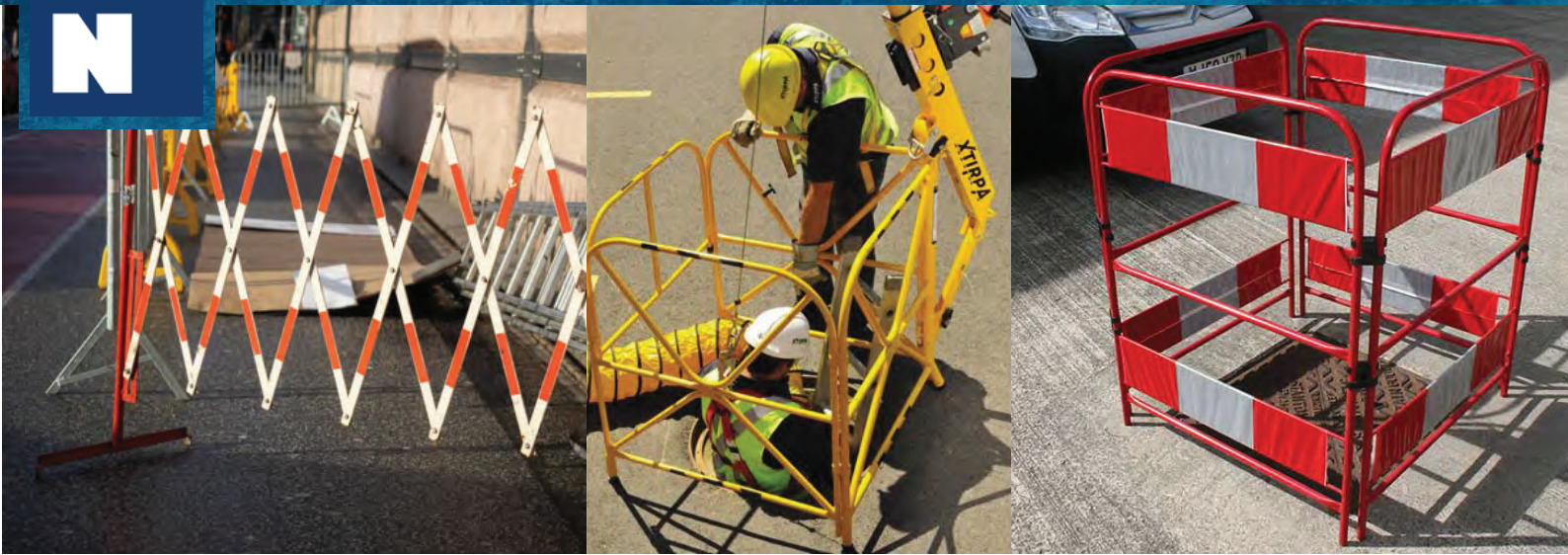


Anlieger bis
Baustelle frei



DIE NGER
STARK

Road Safety
Setup



Shaft safety barrier - Safety of shaft work and on other sites, red coated steel frame with attached white reflecting stripes for extra safety.

Article.

Length 1.0m, height 1m, of **Ø25.0 tube** frame with (3M Adhesive Reflective (EN12899))
 Length 1.5m, height 1m, of **Ø25.0 tube** frame with (3M Adhesive Reflective (EN12899))
 Length 1.5m, height 1m, of **Ø25.0 tube** frame with (3M Adhesive Reflective (EN12899))

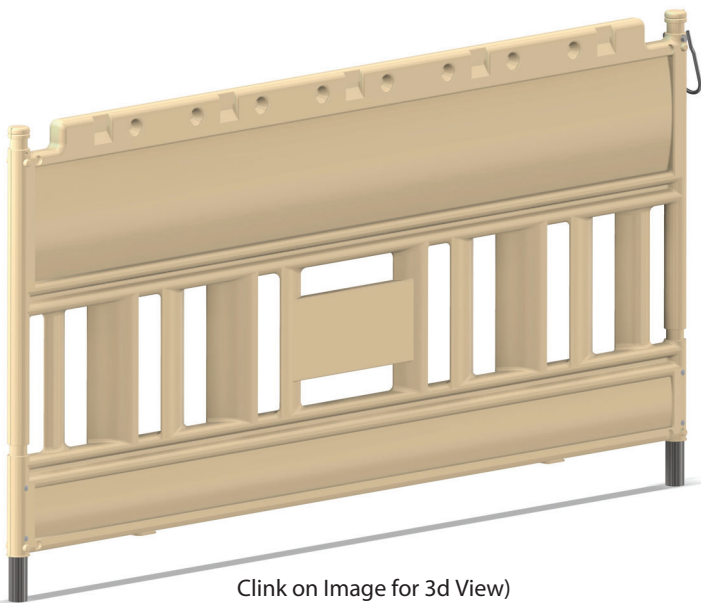
Article no.

4B9-013-1
 4B7-013-2
 4B7-017

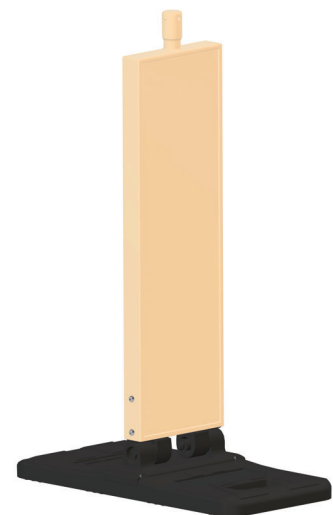
Weight.

7.00 kg
 9.00 kg
 5.00 kg

Available in Galvanized and Powder Coated



Click on Image for 3d View)



Plastic barrier & panel - for road safety warning & protection from the risk ahead

Article.

plastic panel barrier for highway, size length 2m and height 1m (**according to TL blocking**)

plastic panel barrier for street, size length 2m and height 1m (economic model)

Folding able traffic panel (ergonomic design)

Article no.

4B3-006

4B3-007

4B3-001

Weight.

14.50 kg

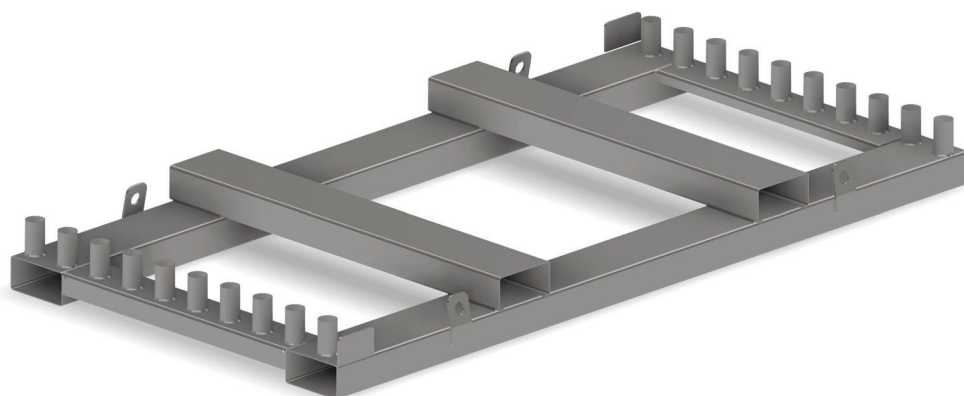
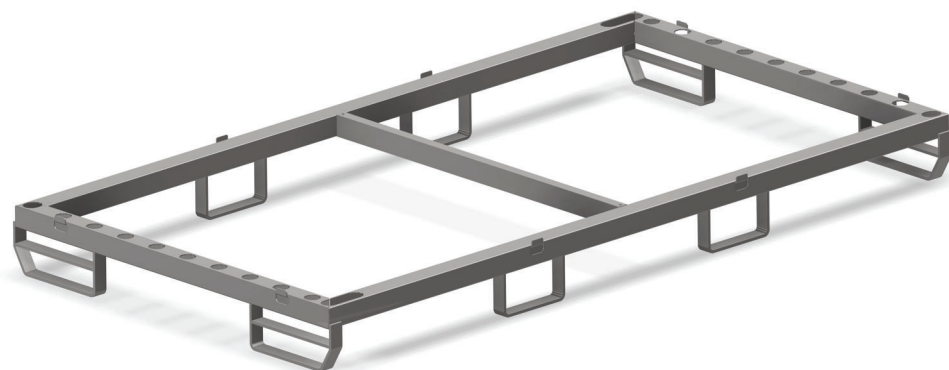
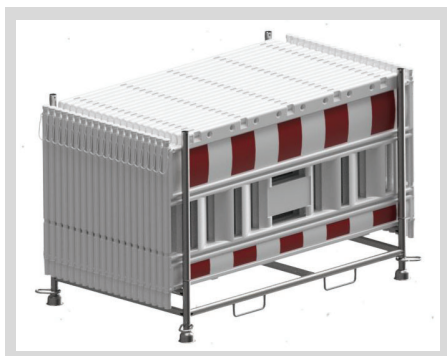
13.00 kg

8.90 kg

Note - **This items sold to B2B, thus they can label there brand and reflective warning sticker according to there need, with varieties of pallet available for easy stroage and transport**



New



Storage & transport pallets - For plastic barrier

Article.

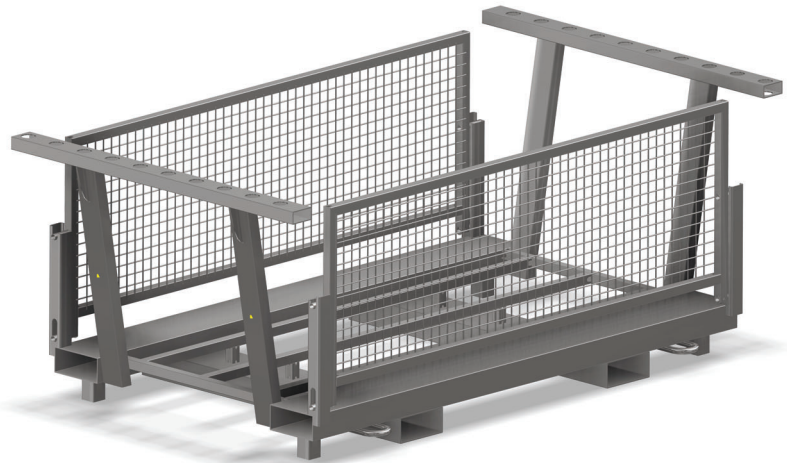
Neu storage and transport pallet for plastic barrier, **for carrying 20 fence**
 Storage and transport pallet for plastic barrier, **for carrying 20 fence**
 Neu storage and transport pallet for plastic barrier, **for carrying 30 panel**

Article no.

S4T1978
 S4T1979
 S4T1986

Weight.

48.00 kg
 76.00 kg
 54.00 kg



Storage & transport pallets - For plastic barrier & panel

Article.

Neu storage and transport pallet for plastic barrier, **for carrying 20 barrier & 21 base**
 Storage and transport pallet for plastic barrier, **for carrying 20 barrier**
 Neu storage and transport pallet for fold able panel, **for carrying 30 panel**

Article no.

S4T1993
 S4B3-007-2
 S4B3-001-2

Weight.

143.00 kg
 53.00 kg
 134.00 kg



Sign holder acc. to TL type - For highways and roads,

Article.

Sign hold, tubes of 60 x 60 x 460mm height, **to load 4 base plate**, Dimensions: 1300 x 300 mm
Weight class K4. For installation, please refer to ZTV-SA

Sign hold, tubes of 60 x 60 x 460mm height, **to load 8 base plate**, Dimensions: 2150 x 620 mm
Weight class K8. For installation, please refer to ZTV-SA

Sign hold, tubes of 40 x 40 x 460mm height, **to load 4 base plate**, Dimensions: 810 x 450 mm
Weight class K4. For installation, please refer to ZTV-SA

Sign hold, tubes of 40 x 40 x 460mm height, **to load 8 base plate**, Dimensions: 1920 x 450 mm
Weight class K8. For installation, please refer to ZTV-SA

Article no.

577-289-Typ2

577-289-Typ1

577-288-Typ2

577-288-Typ1

Weight.

25.0 kg

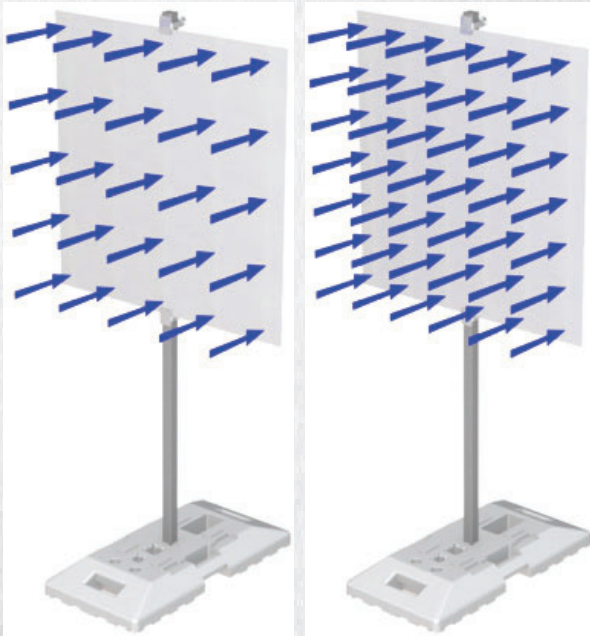
39.5 kg

14.0 kg

23.0 kg

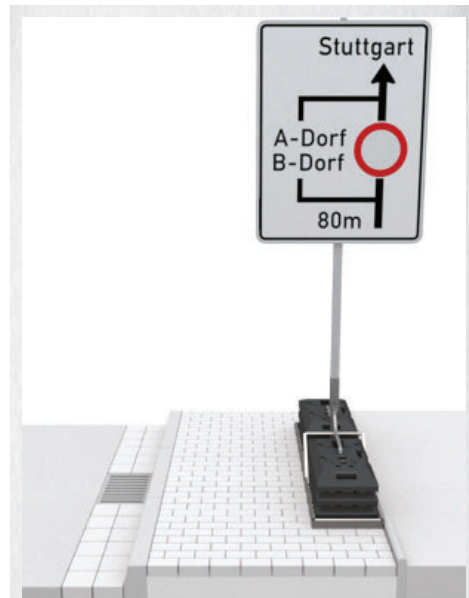
Windlasten innerorts und außerorts

Für den innerörtlichen Bereich sind $0,25\text{kN/m}^2$ definiert, außerorts sind es $0,42\text{kN/m}^2$. Erst wenn diese Windlasten überschritten werden, dürfen temporär eingesetzte Verkehrszeichen umfallen. Hierbei ist natürlich auf die konkrete örtliche Situation zu achten, denn die $0,25\text{kN/m}^2$ gelten selbstverständlich nur in weitgehend windgeschützten, bebauten Gebieten.



innerorts = $0,25\text{kN/m}^2$

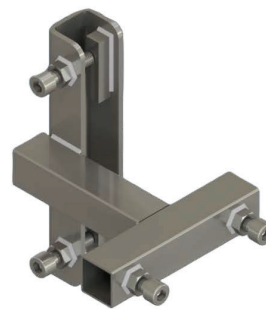
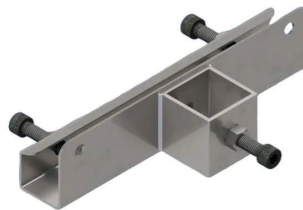
außerorts = $0,42\text{kN/m}^2$



RICHTIG

Seitenabstand, Aufstellhöhe und Mindestbreite sind eingehalten. Genau so stellt man Planskizzen und Lenkungstafeln auf.





Sign holder acc. to TL type - For highways and roads,

Article.

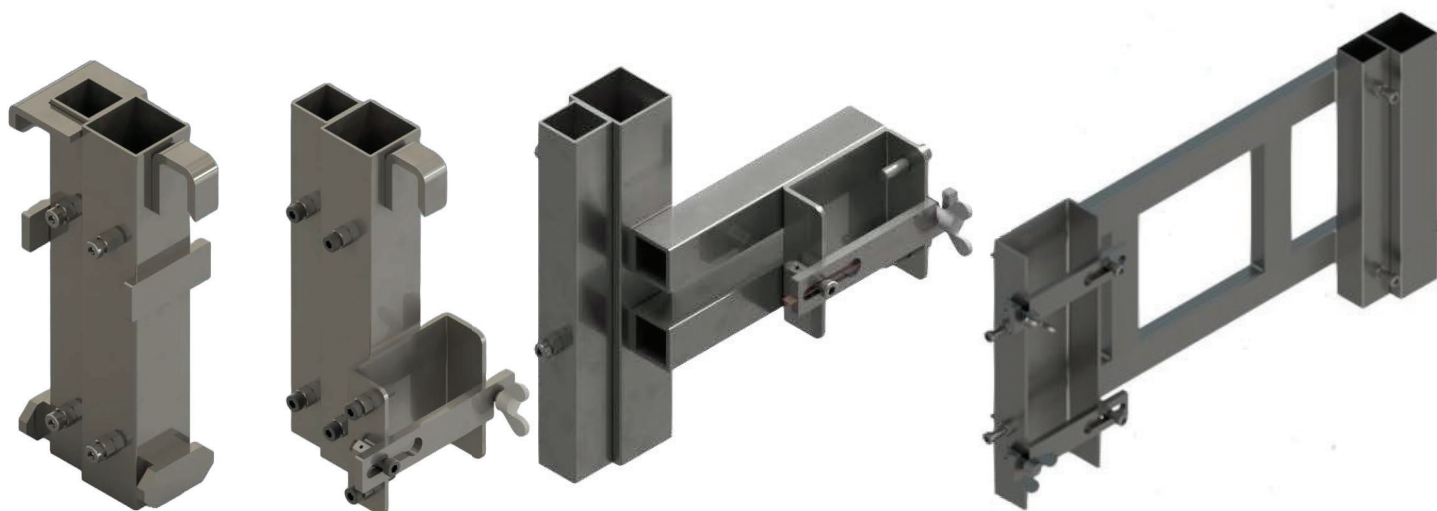
- Sign hold device,** for tube 40mm with support tube welded
- Sign hold device,** for tube 40mm
- Sign hold device,** for tube 40mm
- Sign hold device,** for tube 60mm
- Sign hold device,** Cross-Off device fixed bracket
- Sign hold device,** Cross-Off device rotating bracket

Article no.

- 577-122-Typ1
- 577-122-Typ2
- 577-122-Typ6
- 577-122-Typ5
- 577-122-Typ3
- 577-122-Typ4

Weight.

- 0.7 kg
- 0.9 kg
- 2.5 kg
- 3.0 kg
- 1.3 kg
- 1.5 kg



Crash barrier holder according to TL 97 - For highway safety guardrail

Article.

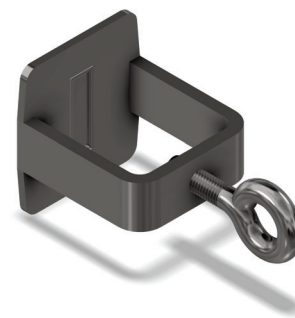
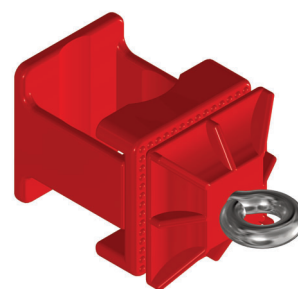
- Crash barrier holder type 1, tube 40 x 40 mm & 60 x 60mm (Super Rail, Sigma IPE 100)
- Crash barrier holder type 2, tube 40 x 40 mm & 60 x 60mm (Super Rail, Sigma IPE 100)
- Crash barrier holder with sideways beam, tube 40 x 40 mm & 60 x 60mm (Super Rail, Sigma IPE 100)
- Crash barrier holder with sideways beam, tube 40 x 40 mm & 60 x 60mm (Super Rail, Sigma IPE 100)

Article no.

- 577-227-Typ1
- 577-227-Typ2
- 577-227-Typ5
- 577-227-Typ6

Weight.

- 6.5 kg
- 7.0 kg
- 15.5 kg
- 18.5 kg



Sign holder acc. to TL type - For highways and roads,

Article.

Sign hold device, for tube 40mm with support tube welded

Sign hold device, for tube 40mm

Sign hold device, for tube 40mm

Sign hold device, for tube 60mm

Sign hold device, Cross-Off device fixed bracket

Sign hold device, Cross-Off device rotating bracket

Article no.

577-122-Typ1

577-122-Typ2

577-122-Typ6

577-122-Typ5

577-122-Typ3

577-122-Typ4

Weight.

0.7 kg

0.9 kg

2.5 kg

3.0 kg

1.3 kg

1.5 kg



Sign board & Battens stand- For warning sign

Article.

Signal board stand with lamp holder and footrest

Signal board clamp for tube

Signal board clamp for wooden battens

Battens stand, available for three and four battens

Article no.

577-325-2

577-325-C1

577-325-C1

577-328-3

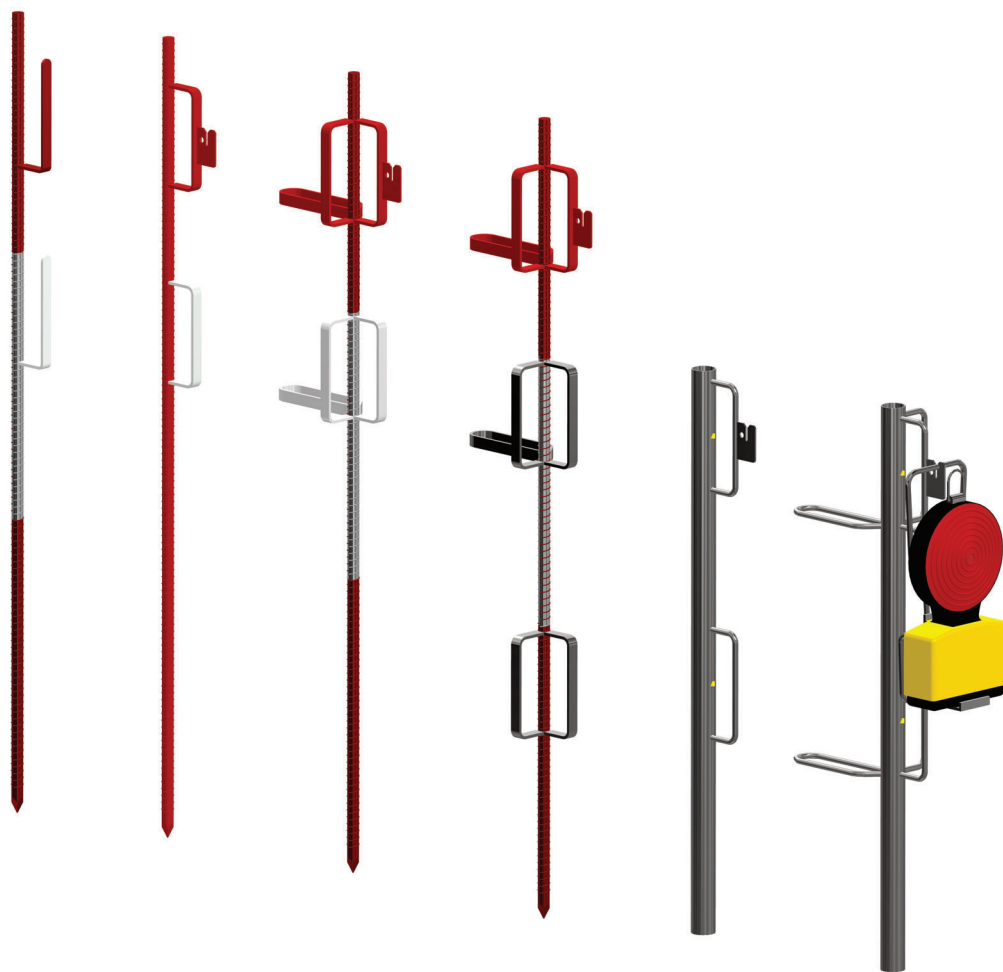
Weight.

7.0 kg

0.5 kg

0.6 kg

24.0 kg



Batten posts - for closing off construction site areas in combination with barrier tape or suspended wooden slats, construction site lamps can be hung in a notched sheet

Article.

- Ø20 x 1400mm, Monier iron with forged tip, **2 slat** holders painted red / white
- Ø20 x 1400mm, Monier iron with forged tip, **2 slat** holders painted red / white with lamp hook
- Ø20 x 1400mm, Monier iron with forged tip, **3 slat** holders painted red / white with lamp hook
- Ø20 x 1400mm, Monier iron with forged tip, **8 slat** holders painted red / white with lamp hook
- Ø42.4 x 990mm tube, 2 slats with lamp hook. galvanized
- Ø42.4 x 990mm tube, 6 slats with lamp hook. galvanized

Article no.

- 588-220-Typ1
- 588-220-Typ2
- 588-220-Typ3
- 588-220-Typ4
- 588-220-Typ6
- 588-220-Typ7

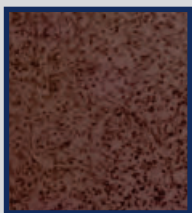
Weight.

- 3.80 kg
- 4.00 kg
- 5.10 kg
- 5.50 kg
- 2.60 kg
- 3.50 kg



Wooden trench bridge - For safe crossing of ditches and canals, galvanized steel frame, with access ramp for wheelchairs, prams, etc., wood cover and skirting of all-wood panel with several coatings. Slip-resistant cover all round, weather-resistant impregnation ensures long life, the side rails are equipped with red-white-red reflecting stripes. Both railings can be removed for space-saving transport and storage. This ditch bridge complies with the workplace and ZTV-SA ordinance, load: 150 kg / m²

Article.	Article no.	Weight.
Width: 1.00m, length: 1.00m	4B9-217-10	43.00 kg
Width: 1.00m. length: 1.70m	4B9-217-17	45.00 kg
Width: 1.00m. length: 2.20m	4B9-217-22	55.00 kg
Width: 1.00m. length: 2.70m	4B9-217-27	70.00 kg
Width: 1.00m. length: 3.20m	4B9-217-32	100.00 kg



slip-resistant cover



impregnation

The impregnation of the wood elements protects them from bad weather and makes the bridge durable.



Aluminum trench bridge -For save crossing of ditches and canals, completely made of aluminium, with access ramp for wheelchairs, prams, etc., floor cover of anti-slip aluminium checker plate (3/4 mm) and skirting of square section and firmly bolted to the supporting construction. The side rails are equipped with red-white-red reflecting stripes and can be folded down for space saving transport and storage. Carry handles on both sides allow an ergonomical handling, 4 angles for stacking allow a safe transport and storage, bridges can be saved on ground by ground pegs, load: 200 kg/m²

Article.

Width: 1.00m, length: 1.70m
Width: 1.00m, length: 2.20m
Width: 1.00m, length: 2.70m
Width: 1.00m, length: 3.20m
Width: 1.20m, length: 2.70m
Width: 1.20m, length: 3.20m
Width: 1.30m, length: 4.00m
Width: 1.30m, length: 5.00m
Width: 1.30m, length: 6.00m

Article no.

4B9-218-S1-17 54.00 kg
4B9-218-S1-22 67.00 kg
4B9-218-S1-27 79.00 kg
4B9-218-S1-32 92.00 kg
4B9-218-S2-27 100.00 kg
4B9-218-S2-32 120.00 kg
4B9-218-S3-40 300.00 kg
4B9-218-S3-50 360.00 kg
4B9-218-S3-60 430.00 kg

Weight.



Aluminum trench bridge "Secure"- With safety handrail for save crossing of ditches and canals, completely made of aluminum, with access ramp for wheelchairs, prams, etc., floor cover of anti-slip aluminum checker plate (3/4mm) and skirting of square section and firmly bolted to the supporting construction. The side rails are equipped with red-white-red reflecting stripes and can be folded down for space saving transport and storage. Carry handles on both sides allow an ergo-nomic handling, 4 angles for stacking allow a save transport and storage, bridges can be saved on ground by ground pegs, load: 200 kg /m²

Article.

Width: 1.00m, length: 2.20m
Width: 1.00m, length: 2.70m
Width: 1.00m, length: 3.20m

Article no.

4B9-218-S5-22 48.00 kg
4B9-218-S5-27 58.00 kg
4B9-218-S5-32 68.00 kg

Weight.





Building Construction



Folding jack Compact S 1200 - Sturdy steel construction with supporting crossbar of 40mm x 40mm square tube and side-welded tube holder for railing posts and fall arrester plate. Both feet (of Ø42mm round tube) can be turned and have 2 base plates each for stable positioning on any ground. Top with crossbar can be telescoped and fixed at several positions by a captive hook, width: 1.20m, load: 1500 kg

Article.

Brown painted, height : 0.75m - 1.30m
Brown painted, height : 1.00m - 1.75m
Brown painted, height : 1.20m - 1.95m

Article no.

448-121-S1
448-121-S2
448-121-S3

Weight.

15.0 kg
19.0 kg
21.0 kg

Article.

Galvanized, height : 0.75m - 1.30m
Galvanized, height : 1.00m - 1.75m
Galvanized, height : 1.20m - 1.95m

Article no.

448-121-S1H
448-121-S2H
448-121-S3H

Weight.

15.0 kg
19.0 kg
21.0 kg



Folding jack Compact S 1500 - Same design as Compact S 1200 but width: 1.50m, load: 1500 kgs

Article.

Brown painted, height : 1.20m - 1.95m
Galvanized, height : 1.20m - 1.95m

Article no.

448-121-S6
448-121-S6H

Weight.

22.0 kg
22.0 kg

Railing post for Compact S - For use as fall arrester, with 3 welded brackets (inner size: 50mm x 160mm) for mounting planks, vertical tube of Ø33.7mm round tube, with welded ring for insertion in the sleeve of Ø42.4mm round tube, height: 1.00m above ground

Article.

Railing post, Brown painted
Railing post, Galvanized

Article no.

448-161-T1
448-161-T1H

Weight.

4.0 kg
4.0 kg



448-161-T2

448-161-T1

Corner railing post - Have double the number of brackets welded in a 90° angle to each other so fall arresters can be installed around corners, height of the corner railing post: 1.00m above ground

Article.

Railing post, Brown painted
Railing post, Galvanized

Article no.

448-161-T2
448-121-T2H

Weight.

4.5 kg
4.5 kg



Folding jack Universal U1500 - Very robust design with supporting cross tube of 80mm x 40mm square tube and side welded tube socket for installation of railing posts (1 railing post is included in the delivery) as back guard to protect from falling or for top mounted parts holders are welded to the bottom of the tube socket in which diagonal braces can be installed, such braces are required as stiffeners from a scaffold height of 2.00m and higher (see article no. 448-161-T3 on page 35) both feet (of Ø42mm round tube) can be turned and have 2 base plates each for high stability on any ground top frame with crossbar can be extended and fixed at several positions by a captive hook, load can be set: 900 kgs

Width: 1.50m
Height: 1.70 - 3.00m

Article.	Article no.	Weight.
Folding Jack U1500, Brown painted	448-121-Ø	44.0 kg
Railing post, Galvanized	448-121-T2H	44.0 kg



Crank-operated scaffolding jack K1200 - Foot frame gives the scaffolding support stability on any ground, the height of the top frame can be adjusted as needed by turning the slip-on crank, you can find the crank further down in this product range (Part-No. 448-161-T7), the rotary movement of the crank is transformed into an up-and-down movement of the top frame by shaft and star wheel, supporting tube of 80mm x 40mm square tube, round tube sockets (Ø48.3mm) welded, on both sides hold the railing post as fall arrester or for mounting the top frame Load: 1600 kgs

Width: 1.20m
Height: 1.20 - 1.95m

Article.	Article no.	Weight.
Jack K1200, Brown painted	448-128-S1-T1	30.0 kg
Jack K1200, Galvanized	448-128-S1-T1H	31.0 kg

Width: 1.20m
Height: 0.65 - 1.10m

Article.	Article no.	Weight.
Jack K1200, Brown painted	448-128-S2-T1	26.0 kg
Jack K1200, Galvanized	448-128-S2-T1H	27.0 kg



Crank-operated scaffolding jack K1500 / 3 - Our crank-operated scaffolding support can be used for many applications in building construction, base made of square tube 50mm x 50mm, welded rigidly, base frame stands safely on any ground, the height of the top frame can be adjusted as needed by turning the slip-on crank, you can find the crank further down in this product range (Part-No. 448-161-T7), the rotary movement of the crank is transformed into an up-and-down movement of the top frame by shaft and star wheel, supporting tube of 80 mm x 40 mm square tube, round tube sockets (Ø48.3mm) welded on both sides hold the railing post as fall arrester or for mounting the top frame, this version already comes with a railing post as back guard for insertion in the side welded sockets, diagonal bracing of the crank operated scaffolding supports is prescribed from 2.00m height and higher, holders for the ends of the diagonal braces are welded at the bottom ends of the tube sockets. Load: 1600 kgs
Suitable diagonal strut can be found further down in our product range.
(Part-No.: 448-161-T3)

Width: 1.50m
Height: 1.70 - 3.00m

Article.	Article no.	Weight.
Jack K1500, Brown painted	448-128-S1-T2	42.0 kg
Jack K1500, Galvanized	448-128-S1-T2H	43.0 kg



Crank-operated scaffolding jack K1500 - Our crank-operated scaffolding support can be used for many applications in building construction, base made of square tube 50mm x 50mm, welded rigidly, base frame stands safely on any ground, the height of the top frame can be adjusted as needed by turning the slip-on crank, you can find the crank further down in this product range (Part-No. 448-161-T7H), the rotary movement of the crank is transformed into an up-and-down movement of the top frame by shaft and star wheel, supporting tube of 80 mm x 40 mm square tube, round tube sockets (Ø48.3mm) welded on both sides hold the railing post as fall arrester or for mounting the top frame. Load: 1600 kgs

Width: 1.50m
Height: 1.20m - 1.95m

Article.	Article no.	Weight.
Jack K1500, Brown painted	448-128-S2-T2	35.0 kg
Jack K1500, Galvanized	448-128-S2-T2H	36.0 kg



Railing post - For insertion in the socket of the crank-operated or universal scaffolding jack, steel tube construction of Ø48.3mm round tube with 2 welded hooks for mounting planks as fall arrester, the planks can be fixed in holes in the hooks, in which nails can be driven to fix the planks, the bottom hook is movable and holds skirting board for extra safety. Railing post height: 1.00m

Article.	Article no.	Weight.
Railing post, Painted	448-161-T8	3.5 kg
Railing post, Galvanized	448-161-T8H	3.5 kg



Corner railing post - Corner railing post has double the number of brackets welded in a 90° angle to each other so fall arresters can be installed around the corner, height of the corner railing post: 1.00m above ground

Article.	Article no.	Weight.
Corner railing post, Painted	448-161-T9	4.0 kg
Corner railing post, Galvanized	448-161-T9H	4.0 kg



Trench shoring spindle separate, Ø32mm - Ø32mm solid threaded spindle with welded claw plate with 2 fastening holes. Claw plate dimensions: 70mm x 70mm, wing nut with internal groove for locking ring of malleable cast iron, brown finish

Article.	Article no.	Weight.
total length: 450mm thread length: 300mm	681-101	3.50 kg



Trench shoring tube separate, Ø42mm - Ø42.4mm round tube, with welded claw plate with 2 fastening holes. Claw plate dimensions: 70mm x 70mm, brown finish

Article.	Article no.	Weight.
Trench tube length: 45cm	681-111	1.50 kg
Trench tube length: 55cm	681-112	2.00 kg
Trench tube length: 75cm	681-113	2.50 kg
Trench tube length: 105cm	681-114	3.50 kg
Trench tube length: 135cm	681-115	4.00 kg



Trench shoring „Perfect“ Ø32mm - For civil engineering use, for bracing and supporting canal walls, acc. to DIN 4124 with test label TBG-4P 32, spindle: Ø32mm, outer tube: Ø42.4mm with claw plates 70mm x 70mm on both sides, brown finish

Article.	Article no.	Weight.
Trench 0.50 - 0.80m, 39.90 kN - 37.20 kN	681-211	5.20 kg
Trench 0.60 - 0.90m, 39.90 kN - 34.10 kN	681-212	5.50 kg
Trench 0.80 - 1.10m, 39.50 kN - 29.40 kN	681-213	6.20 kg
Trench 1.10 - 1.40m, 37.70 kN - 29.30 kN	681-214	7.00 kg
Trench 1.40 - 1.70m, 31.70 kN - 26.50 kN	681-215	8.00 kg



Solid wall pallet - For universal use in storage, vertical and cross tubes made of Ø48.3mm round tube, inside dimensions: 1.43m x 0.87m x 0.50m, solid wall pallet can hold up to 1.5 tons of load, suitable for transport by fork-lift truck, platform floor truck or crane, the shape of the feet adds stability of the stack, 4 containers are possible in a stack

Article.	Article no.	Weight.
Solid wall pallet, Painted	601-334	79.00 kg



Trench shoring „Perfect“ Ø48mm - For civil engineering use, for bracing and supporting canal walls, acc. to DIN 4124 with test label TBG-4P 48, spindle: Ø48.3mm, outer tube: Ø57mm with supporting angle 100mm x 150mm on both sides, brown finish

Article.	Article no.	Weight.
Trench 0.70 - 1.17m, 65.50 kN - 61.10 kN	681-311	8.00 kg
Trench 0.90 - 1.50m, 65.50 kN - 59.90 kN	681-312	10.00 kg
Trench 1.20 - 2.10m, 60.10 kN - 51.70 kN	681-313	13.00 kg



Trench shoring „Perfect“ Ø60mm - For civil engineering use, for bracing and supporting canal walls, acc. to DIN 4124 with test label TBG-4P 60, spindle: Ø60mm, outer tube: Ø70mm with supporting angle 100mm x 150mm on both sides, brown finish

Article.	Article no.	Weight.
Trench 0.90 - 1.50m, 100.00 kN - 100.00 kN	681-411	17.00 kg
Trench 1.40 - 2.00m, 100.00 kN - 96.90 kN	681-412	20.00 kg
Trench 1.90 - 2.50m, 98.80 kN - 83.90 kN	681-413	23.00 kg
Trench 2.40 - 3.00m, 80.80 kN - 75.30 kN	681-414	26.00 kg



Stackable pallet - For universal use for the storage of long goods, vertical and cross tubes are made of Ø48.3mm round tube, inside dimensions: 1.43m x 0.87m x 0.70m, with additional center welded cross tube, the pallet can carry loads up to 1.5 tons, can be moved by fork-lift truck, platform floor truck or crane, the tulip shape of the feet gives the pallet stack stability

Article.	Article no.	Weight.
stackable pallet, Painted	601-114	29.00 kg



the products shown in this catalogue
designed & manufactured by NavAstrid in chennai

www.navastrid.de

CTH Raod, Veppampattu, TamilNadu - 602024. INDIA